

Getting started with G/On Setup and Configuration

*A tutorial covering the basics of
the G/On Configuration Client*

G/On 5.4
Document revision 0.91
2010-06-08

G/OnTM 5

About this document

This document gives an introduction to the basic functionality of the G/On Configuration program.

If you do not find the information you need in this document, you may want to look in the other documents in the G/On software documentation suite:

- G/On User Guide – Getting started – Fedora
- G/On User Guide – Getting started – Windows XP
- G/On User Guide – Getting started – Windows Vista
- G/On User Guide – Getting started – Windows 7
- G/On User Guide – Getting started – Mac
- G/On User Reference
- Getting started with G/On Setup and Configuration
- Getting started with G/On Management
- Getting started with Field Deployment
- Getting started with Secure Desktop
- G/On Setup and Configuration Reference
- G/On Management Reference
- G/On Customization Reference

© Giritech A/S, 2010
Spotorno Allé 12, 2.
2630 Taastrup
Denmark
Phone +45 70.277.262

Legal Notice

Giritech reserves the right to change the information contained in this document without prior notice. Giritech® and G/On™ are trademarks and registered trademarks of Giritech A/S. Giritech A/S is a privately held company registered in Denmark. Giritech's core intellectual property currently includes the patented systems and methods known as EMCADS™. Other product names and brands used herein are the sole property of their owners. Unauthorized copying, editing, and distribution of this document is prohibited.

Contents

About this document.....	2
Contents.....	3
Introduction.....	4
Before installation.....	5
Supported Platforms.....	5
Java Runtime Environment.....	5
Active Directory.....	5
Preparations.....	5
Installation.....	6
Server Installation.....	6
Initial server configuration.....	6
License Handling.....	7
Using the Installation Wizard.....	8
Database Configuration.....	9
Management Server Configuration.....	9
Gateway Server Configuration.....	10
HTTP Encapsulation.....	10
Directory Services Configuration.....	11
Active Directory User Directory Plugin Configuration.....	11
LDAP User Directory Plugin Configuration.....	11
Local Windows User Plugin Configuration.....	11
Finalize Installation.....	11
Configuration Status.....	13
Using G/On Management.....	14
Changing the Server Configuration.....	14
Restarting from Scratch.....	14

Introduction

A full functioning Installation consists of the following steps:

1. Preparation of the installation
2. Installing the G/On software on the G/On server
3. Configuration of the two G/On service modules, G/On Gateway and G/On Management
4. Setting up basic policies and adding users and authentication tokens

This document describes the basic preparation, installation and configuration of the G/On solution. The last step (number 4 above), of setting up basic policies and adding users and authentication tokens is described in the document: **Getting started with G/On Management**.

In case you need more detailed information, please refer to:

- G/On Set-up and Configuration Reference
- G/On Management Reference

Assumptions: In step 4 (Getting started with G/On Management), it is assumed that the G/On server is installed on a *physical server machine, with a USB port*, which can be used for enrolling and deploying software to the first token(s). For demo/test installations, you may install on a Windows desktop OS (XP, Vista or 7). This usually works fine, even though it is not supported for production use. The only exception is the port scanning feature which does not work properly on the desktop operating systems.

Before installation

Supported Platforms

Check whether your intended platform is supported, in the document: G/On Set-up and Configuration Reference.

Java Runtime Environment

The G/On 5 Server Configuration and G/On 5 Management requires that Java Runtime Environment (JRE) is installed. Get it here: <http://www.java.com/> **OBS:** The 32bit version of the JRE must be installed, even in the case where a 64bit OS is used.

Active Directory

In order for Active Directory integration to work properly the installation must be done on a computer which is either on the Active Directory domain or on a domain with which a trust relationship has been established. See the document: G/On Set-up and Configuration Reference for more details.

Preparations

Before starting the installation please consider collecting the following information:

<p>Which IP address and tcp port should the clients connect to, when connecting from outside the firewall?</p> <p>Symbolic/DNS name for the IP can also be used. The IP address is part of the G/On License File, and must be specified when ordering G/On.</p> <p>Please note, that IP address and port number(s) must be specified at ordering time – and is part of the license agreement.</p>	<p>IP/DNS address and Port that the G/On client should connect to.</p> <p>The default port number is 443, even though 3945 is the official IANA allocated port-number for G/On. If possible, port 80 – or 443 are normally good choices, as these ports are open outbound in most environments. So by selecting these ports, it is even more likely, that G/On clients will be able to connect to the G/On server</p>
<p>Which AD domain should be used to authenticate users ?</p> <p>This domain will also be used to get users and groups</p>	<p>(Domain, e.g. giritech.com)</p>

Installation

The installation is done using the installer, which at the end will start the G/On Configuration program. G/On Configuration includes all the basic, technical setup of server IP addresses etc.

Server Installation

Please download the latest installer from Giritech's website at <http://www.giritech.com/int/Support-Download/Product-Download>

Store it on the server on which you want to install G/On.

Installation is done in two steps: actual installation of the G/On Server software modules – and subsequently the initial configuration of the G/On main components.



The installation requires about 400MB free disk space.

Once the installation is completed, you can continue directly with the initial configuration (recommended). Once you press finish – and if you have checked the "Run G/On Configuration Wizard" - allow some time for the wizard to start. Alternatively, you can find the G/On Configuration program in the Windows Start Menu.

NOTE: On Windows Server 2008, you must run the G/On Configuration program, as Administrator: Find the program in the Windows Start Menu, right-click on it, and choose: "Run as Administrator".

Initial server configuration

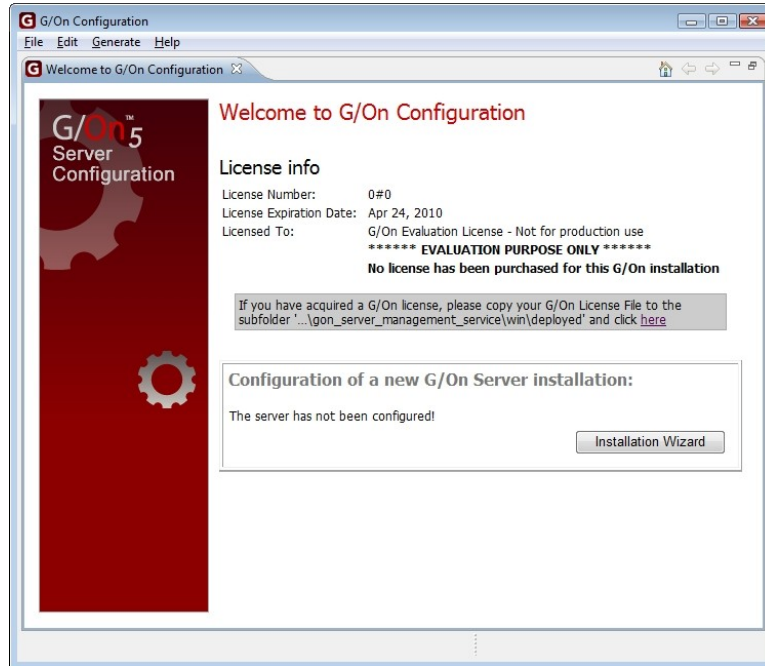
Initial Server Configuration is done through the configuration wizard. Before configuring the G/On server, you may wish to obtain a proper G/On license file. This file will determine the number of G/On users possible, as well as specifications regarding purchased options etc.

If you do not use a proper G/On license file, the installation will proceed with a so-called demo-license. This will allow you to test G/On, but not all options.

License Handling

All G/On installation options are specified in the license file. The license file is obtained as part of the purchase process for G/On. If you do need a proper G/On license file, please contact your Giritech Partner.

In the welcome screen below, you can see the current status of your license file:

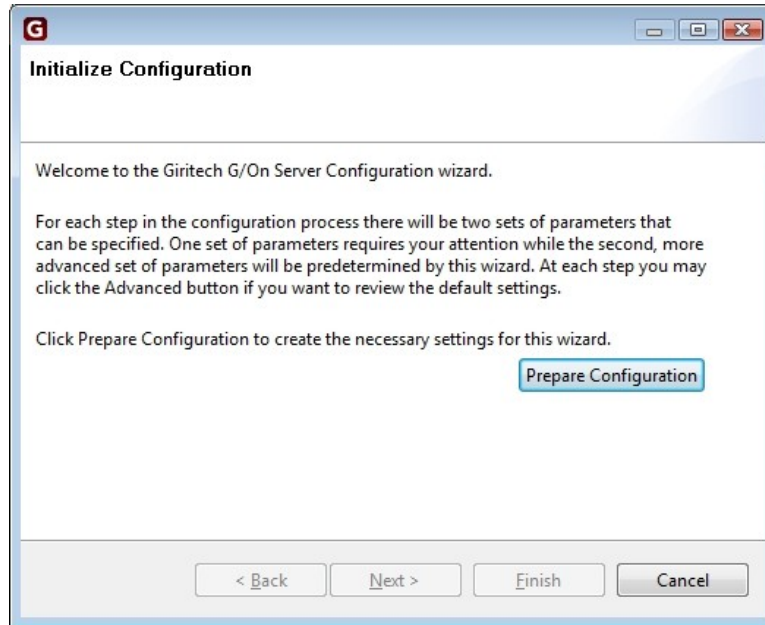


If you have received a proper license file, copy it to the folder: **...gon_server_management_service\win\deployed** (please note that there is also a gon_client_management_service folder. Make sure to use the "server" folder).



Using the Installation Wizard

Press the Installation Wizard button on the configuration welcome screen. You can also start the Wizard at a later time, from the Windows G-On program menu: "G-On Configuration". Once started the following instruction screen will be shown:



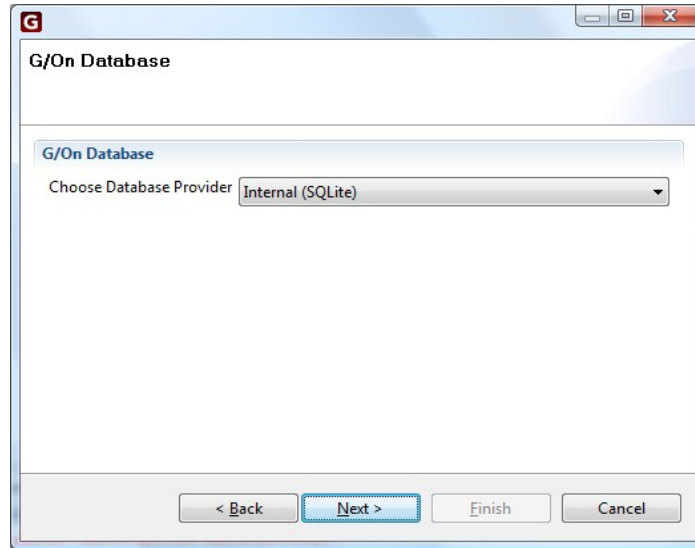
Please read, and continue by pressing "Prepare Configuration" - and the Configuration Wizard will generate an initial set of configuration data. Once done, press **Next** on the Initialize Configuration screen.

A G/On installation will normally have at least two services running -

1. The G/On Management Server – allowing Management of the solution (users, authentication and authorization policies)
2. The G/On Gateway Server – performing the actual tasks of connecting users with applications according to the policies specified.

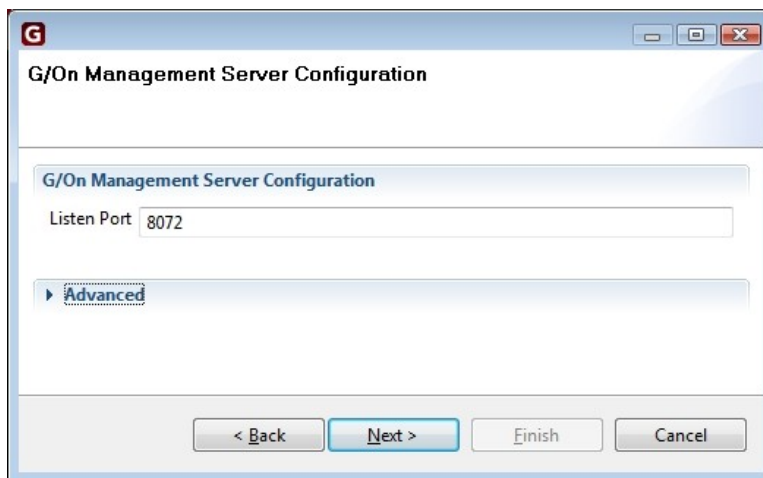
Each server/service is configured separately as described in the following.

Database Configuration



Choose the default Internal database and press “Next”.

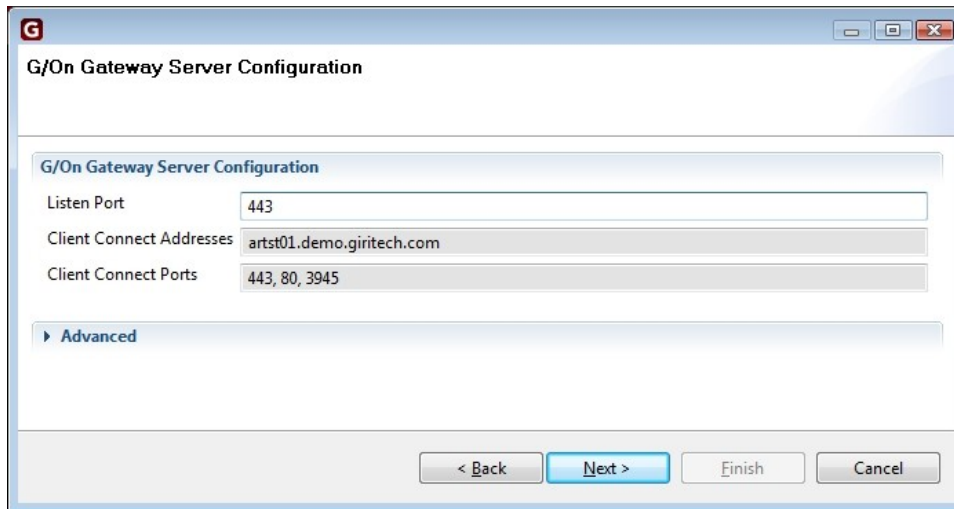
Management Server Configuration



Listen Port: To enable the G/On Management Server, a port must be designated (default is 8072). This port is used for the G/On Management client to connect to the management Server.

OBS: In the default set-up, the Management Client must run on the same machine as the Management Server, in order to be able to connect to it. If you want to run the Management Client on a remote PC, define a G/On menu action for this purpose and run G/On Management through a G/On connection.

Gateway Server Configuration



Listen Port: The port that the Gateway Server listens on in order to accept connections from G/On Clients.

Client Connect Addresses: This is the IP address (DNS name or number), that the G/On clients will use to connect to the G/On server. Please note, that when using a proper license, this address is fixed, and must be determined at the time of ordering G/On, as the connection address is part of the license (file). If using the demo license, any address can be specified.

Client Connect Ports: The default port number is 443, even though 3945 is the official IANA allocated port-number for G/On. If possible, port 80 – or 443 are normally good choices, as these ports are open outbound in most environments. So by selecting these ports, it is even more likely, that G/On clients will be able to connect to the G/On server. The port must be specified at the time of ordering G/On, and is part of the license (file). If using the demo license, any port can be specified.

Note: Remember to set up your firewall/router so it accepts connections on this port and forwards the connections to the Listen port specified for the Gateway server (see above).

HTTP Encapsulation

In some environments, a deep packet inspection firewall or other might block the communication between G/On clients and the G/On server. To allow connectivity in these situations, the **HTTP Encapsulation** option should be specified when ordering G/On.

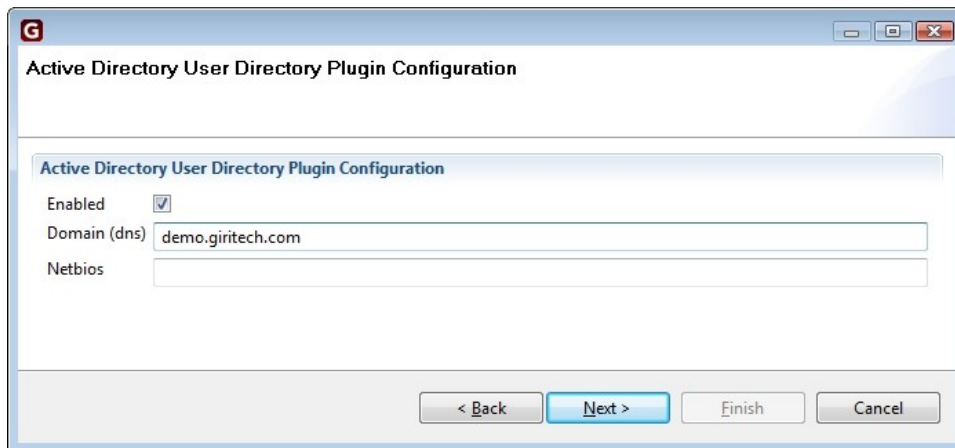
If the feature is not included in your license, or you do not wish to configure it, you can skip this step.

For information on configuring this option, see the G/On Set-up and Configuration Reference.

Directory Services Configuration

Identity management in G/On is through a directory service like Microsoft Active Directory (AD) – and/or LDAP (Lightweight Directory Access Protocol) – and/or local users and groups on the G/On server machine.

Active Directory User Directory Plugin Configuration



On the Active Directory configuration screen, you must specify the **Domain (dns)** name of the Active Directory. Normally, the **Net bios** name is automatically filled in. If this does not happen, please fill in the Netbios name manually.

If the AD feature is not included in your license, or you do not wish to configure it, you can skip this step.

LDAP User Directory Plugin Configuration

As an alternative to Active Directory, an LDAP enabled user directory can be used. For information on configuring this option, see the G/On Set-up and Configuration Reference.

If the feature is not included in your license, or you do not wish to configure it, you can skip this step.

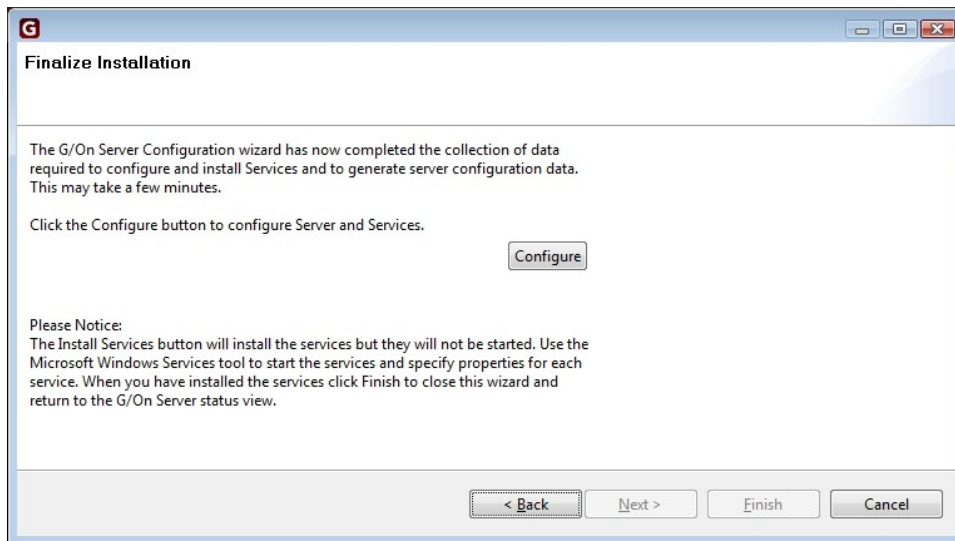
Local Windows User Plugin Configuration

As an alternative (or supplement) to Active Directory, G/On may be configured to use local users and groups that exist on the server machine where the G/On Gateway and Management Servers are running.

If you do not wish to configure this feature, you can skip this step.

Finalize Installation

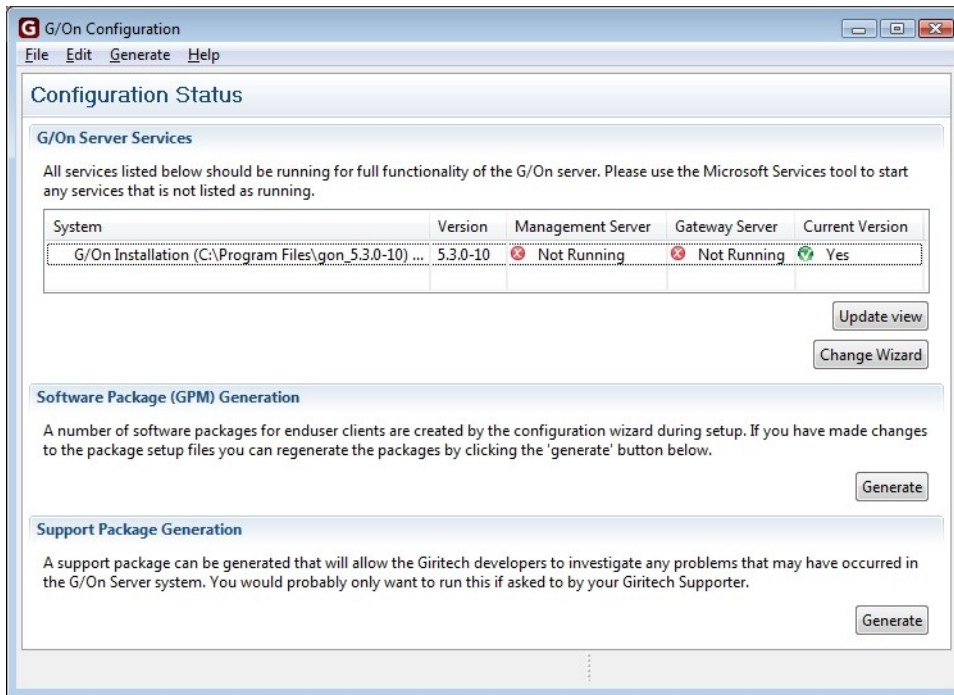
Last step in the initial installation process of the G/On server is to configure the Management and Gateway services on the G/On server. Also, the system will use the supplied configuration data to generate the initial G/On Client Software Packages.



Press the **Configure** button to start configuration and services and generation of G/On Client Software packages.

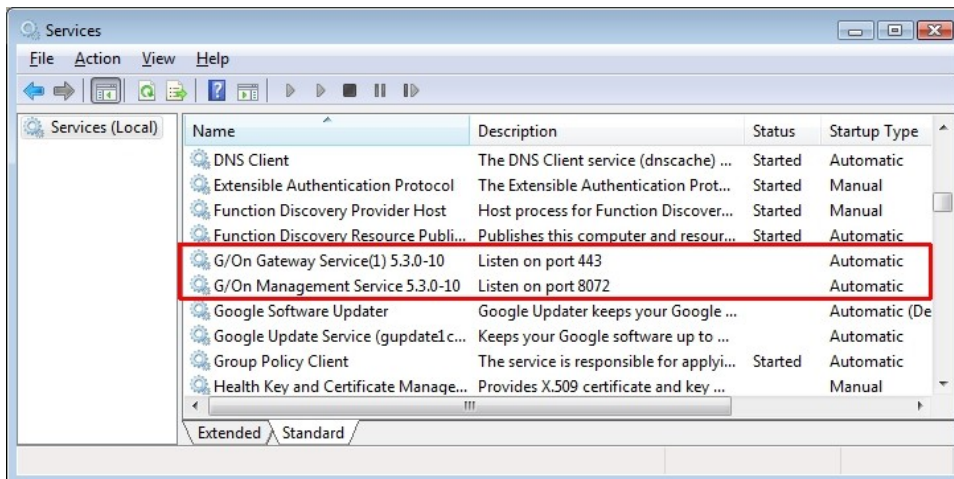
Once the configuration routine has finished, press **Finish** to go to the Configuration Status screen.

Configuration Status



The configuration Status screen allows you to see the current status of the G/On services. Note that the Management and Gateway services need to be started manually (first time).

You can start the G/On services by using the “Services” Management interface in windows. (**All Programs** → **Administrative Tools** → **Services**) – to see the following screen:



Locate the two installed G/On services (Management and Gateway) highlighted above – and right-click on each one in turn, and choose: Start.

After starting the G/On services and pressing **Update view** on the G/On configuration status screen, the services will be listed as “running”.

Using G/On Management

After installation and running the G/On Configuration wizard, the program: G/On Management can be used for setting up authentication and authorization policies, preparing tokens etc. Please see the separate document: “Getting Started with G/On Management”.

NOTE: *On Windows Server 2008, you must run the G/On Management program, as Administrator: Find the program in the Windows Start Menu, right-click on it, and choose: “Run as Administrator”.*

Changing the Server Configuration

Re-configuration of the system can be done by clicking on “Change Wizard” in the Configuration Status Window. For details, see the document:: G/On Set-up and Configuration Reference.

Restarting from Scratch

Cleaning and re-doing the configuration of the system, from scratch can be done by using the wizard in G/On Configuration. Start the G/On Server Configuration program. Choose the menu item: “Help – Welcome to the G/On Configuration”. Click the button: Start Wizard. **Warning:** All configuration and management settings are reset.