

Getting started with Field Deployment

*The basics of enabling that users install
G/On client software and enroll tokens*

About this document

This document gives an introduction to the basic functionality of the G/On Management program.

If you do not find the information you need in this document, you may want to look in the other documents in the G/On software documentation suite:

- G/On User Guide – Getting started – Fedora
- G/On User Guide – Getting started – Windows XP
- G/On User Guide – Getting started – Windows Vista
- G/On User Guide – Getting started – Windows 7
- G/On User Guide – Getting started – Mac
- G/On User Reference
- Getting started with G/On Setup and Configuration
- Getting started with G/On Management
- Getting started with Field Deployment
- Getting started with Secure Desktop
- G/On Setup and Configuration Reference
- G/On Management Reference
- G/On Customization Reference

© Giritech A/S, 2010
Spotorno Allé 12, 2.
2630 Taastrup
Denmark
Phone +45 70.277.262

Legal Notice

Giritech reserves the right to change the information contained in this document without prior notice. Giritech® and G/On™ are trademarks and registered trademarks of Giritech A/S. Giritech A/S is a privately held company registered in Denmark. Giritech's core intellectual property currently includes the patented systems and methods known as EMCADS™. Other product names and brands used herein are the sole property of their owners. Unauthorized copying, editing, and distribution of this document is prohibited.

Contents

About this document.....	2
Contents.....	3
Introduction.....	4
Before You Start.....	4
Preparation of the Client Installation Program.....	5
Defining which users can do field enrollment.....	6
Using the Client Installation Program.....	8
Approving Enrollment Requests.....	12

Introduction

This document describes the basic procedure for enabling that users themselves can prepare a G/On token for use. The procedure includes the following steps:

- The G/On administrator prepares an installation program and makes it available for the users, e.g. on a shared drive, or via an URL on the intranet or internet.
- The G/On administrator specifies which users are allowed to request enrollment of tokens
- The G/On Administrator sends out token hardware to the users (optional – alternatively, the users can use their PC as an authentication token).
- The G/On user obtains the Installation program from the published location and runs the program. The program installs G/On client software on a token and sends a request to the G/On server, that the token be enrolled as a personal authentication factor for the user
- The G/On Administrator approves the enrollment request.

The document describes all of these steps, and it's main target audience is the G/On administrator.

However, the section which describes the end-user's part of the process can be used as a starting point for making customer specific documentation to be sent out to the end-users.

Note that some of the more advanced aspects of field deployment are not covered in here. See the section “Field Deployment – Advanced Setup” in G/On Setup and Configuration Reference.

Before You Start

Please make sure that you have completed the following preparations, before starting on the process described in this document:

1. Install the Nullsoft scriptable install system on the G/On server. Get it here: <http://nsis.sourceforge.net/Download>
2. Make sure that the setup of the G/On servers has been completed. See: “Getting started with G/On Setup and Configuration” and “G/On Setup and Configuration Reference”.
3. If you change client connect addresses and/or ports, make sure to generate packages again, and then (re-)generate the client installation program. This procedure will ensure that the updated client contact information is included in the client installation program.

Preparation of the Client Installation Program

Use the Nullsoft installer (NSIS) to generate the G/On client installation program, as follows:

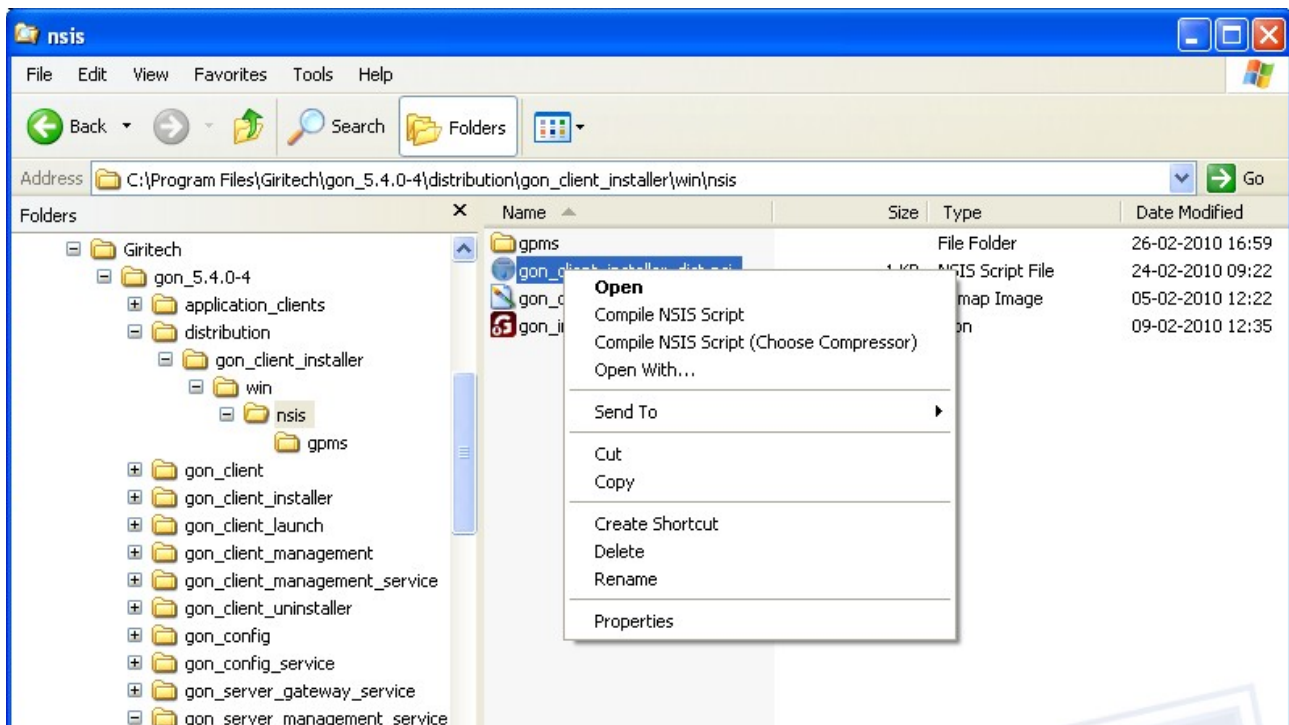
On Windows Server 2003, do not start the NSIS program. Simply right-click on:

distribution\gon_client_installer\win\nsis\gon_client_installer_dist.nsi

and select “Compile NSIS Script”.

On Windows Server 2008, start the NSIS program with “Run as administrator”. Then choose “Compile NSI scripts” and in the File menu: Load Script... and then specify:

distribution\gon_client_installer\win\nsis\gon_client_installer_dist.nsi



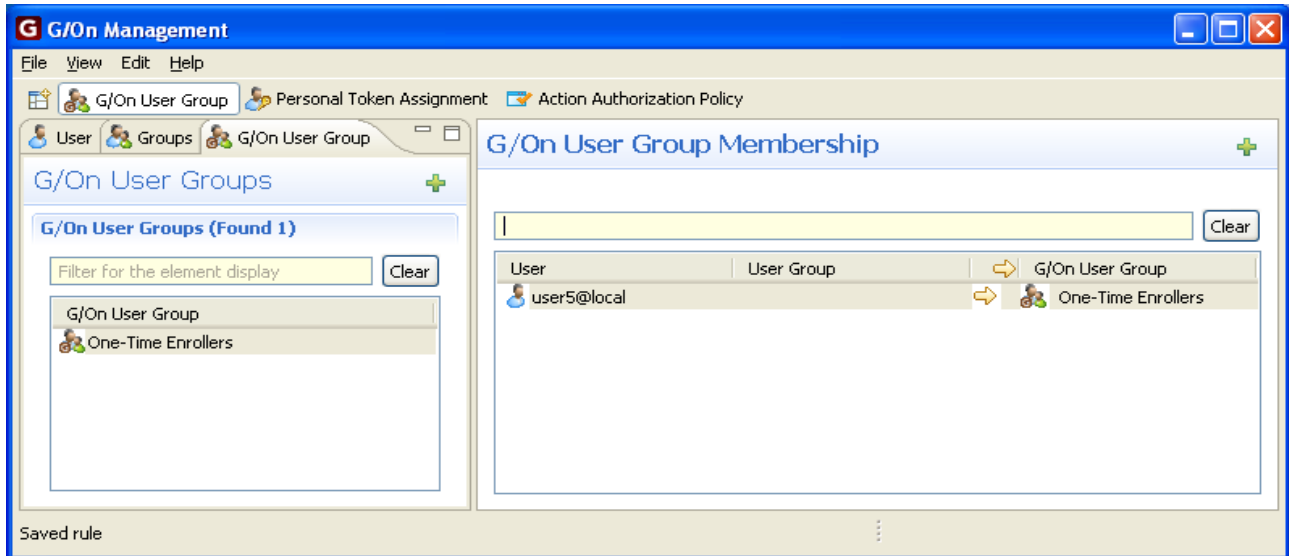
The resulting client installation program is placed here:

distribution\gon_client_installer\win\G-On Client Installer.exe

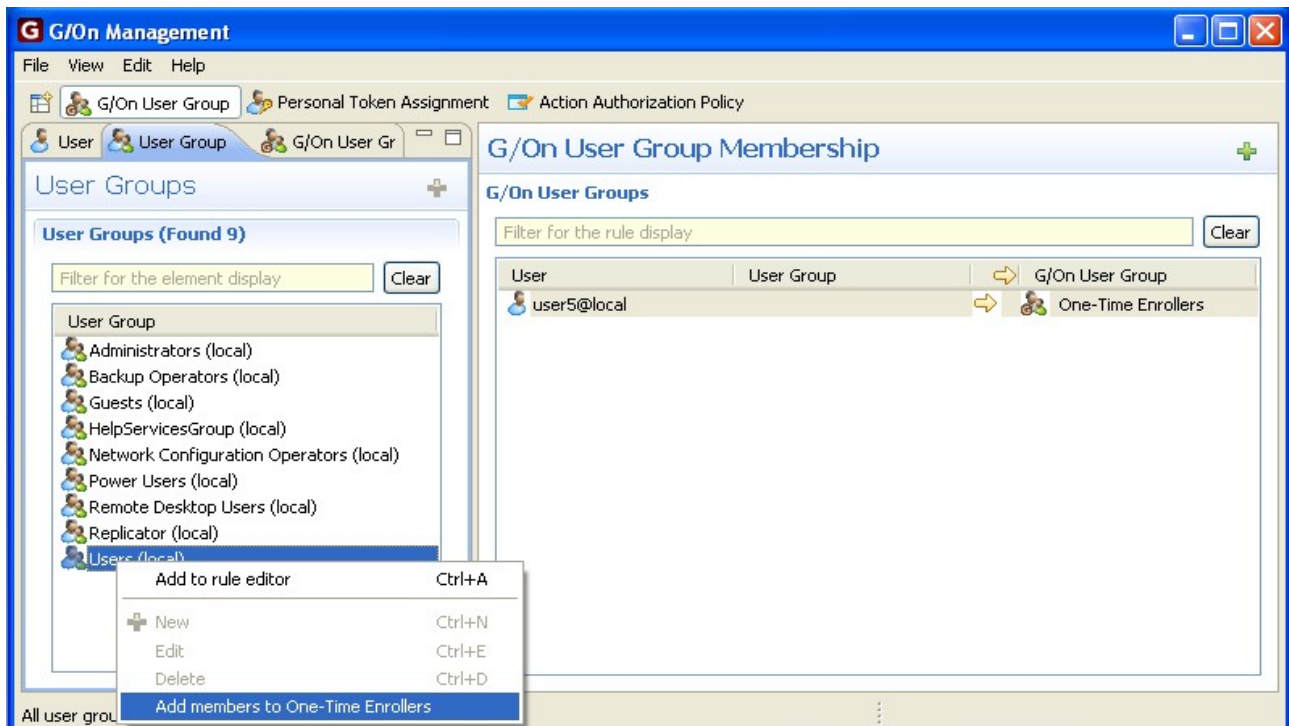
Make the client installation program available for users, e.g., on a shared network drive or an intranet or the internet.

Defining which users can do field enrollment

Add users to the “One-time Enrollers” group.

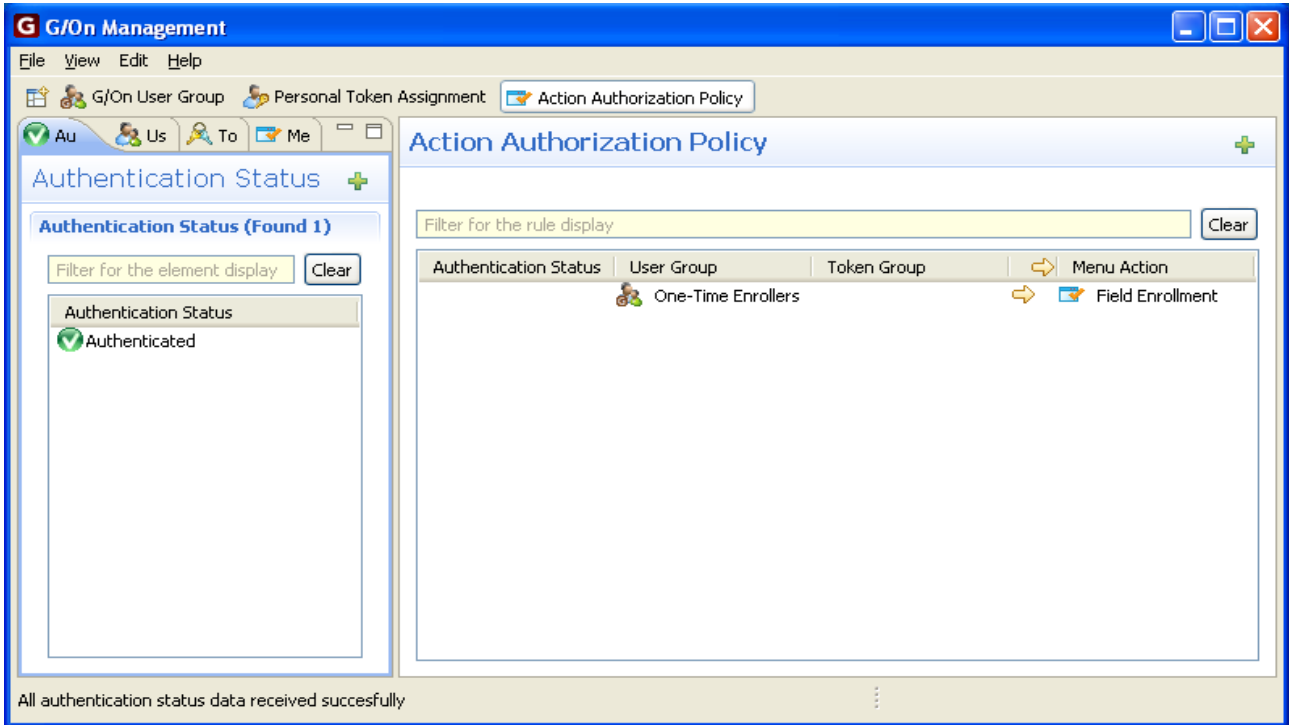


Hint: Right-click on a user group and select “Add members to One-Time Enrollers”, to add all members of a group, in one operation.



OBS: When a user has successfully submitted an enrollment request, he is automatically removed from the One-Time Enrollers group. So if he should be allowed to enroll again, later, he must be added to the group once more.

Make sure, that there is an authorization rule specifying that one time enrollers are authorized to do the Field Enrollment action. If your system was upgraded from 5.3, you will have to create this rule, manually.



Using the Client Installation Program

The following description assumes that:

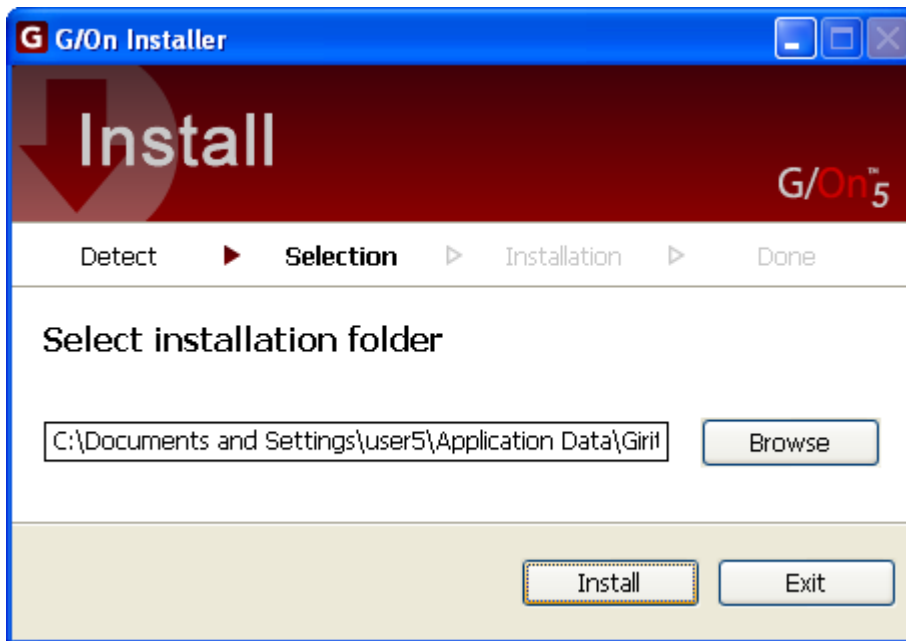
1. There are no hardware tokens inserted in the user's PC and
2. The user's PC is to be used as an authentication factor

Step 1: Obtain the client installation program.

Step 2: Start the client installation program.

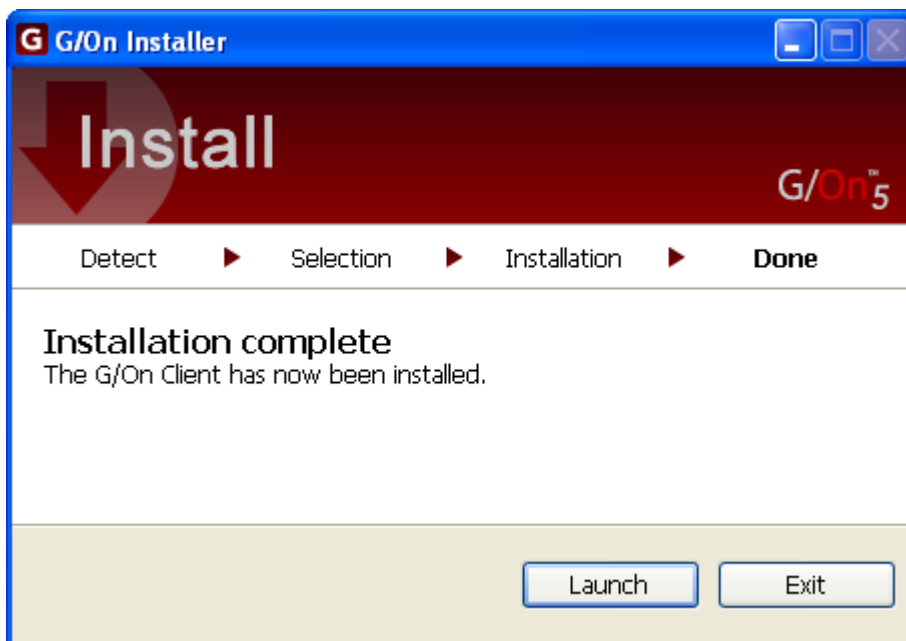


Note: The use of the computer as authentication factor achieved by installing a “Computer User Token” on the local user account indicated (an account on the user's PC). The Computer User Token will only be visible, when logged in to this local user account. Click Next.



Note: This folder is automatically suggested by the installation program. Normally, there is no need to change this.

Click Install.

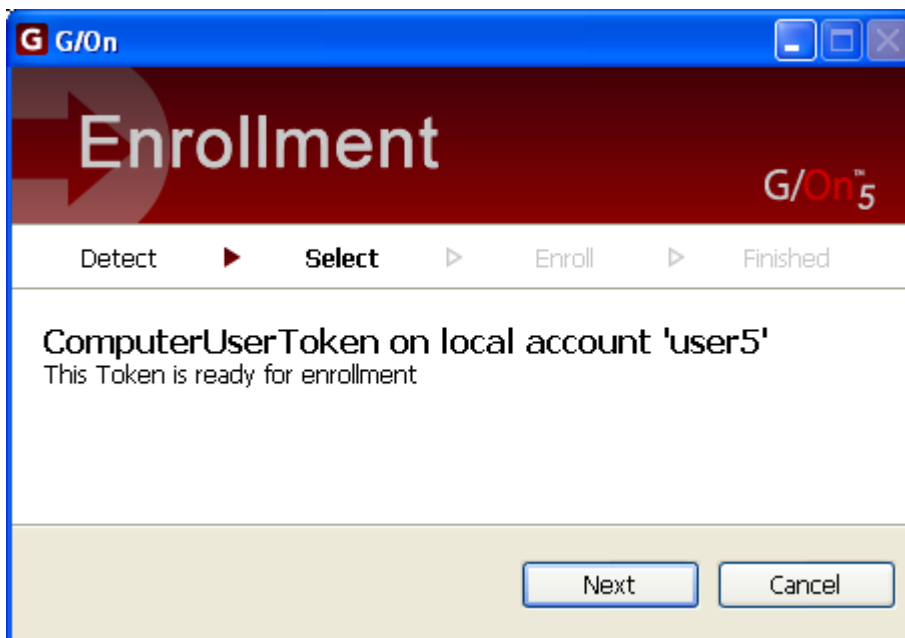


Click Launch.



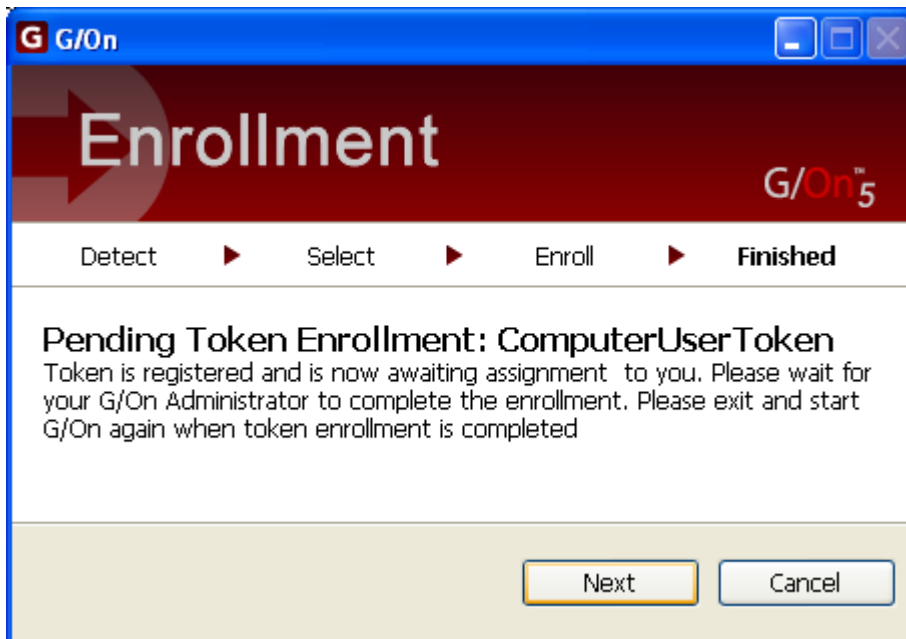
The image shows a Windows-style dialog box titled "G/On Login". The window has a blue title bar with standard minimize, maximize, and close buttons. The main area has a dark red header with the "G/OnTM 5" logo on the left and "Virtual Access" on the right. Below the header is a white box labeled "Login" containing two input fields: "User:" and "Password:". At the bottom of the dialog, there is a checkbox labeled "Change Password" and two buttons: "OK" and "Cancel".

Log in with G/On user name and password.



The image shows a Windows-style dialog box titled "G/On". The window has a blue title bar with standard minimize, maximize, and close buttons. The main area has a dark red header with a large white arrow pointing left and the word "Enrollment" in white. The "G/OnTM 5" logo is in the top right corner. Below the header is a progress bar with four steps: "Detect", "Select", "Enroll", and "Finished". The "Select" step is currently active. Below the progress bar, the text reads "ComputerUserToken on local account 'user5'" and "This Token is ready for enrollment". At the bottom of the dialog, there are two buttons: "Next" and "Cancel".

Click Next.



Click Next.

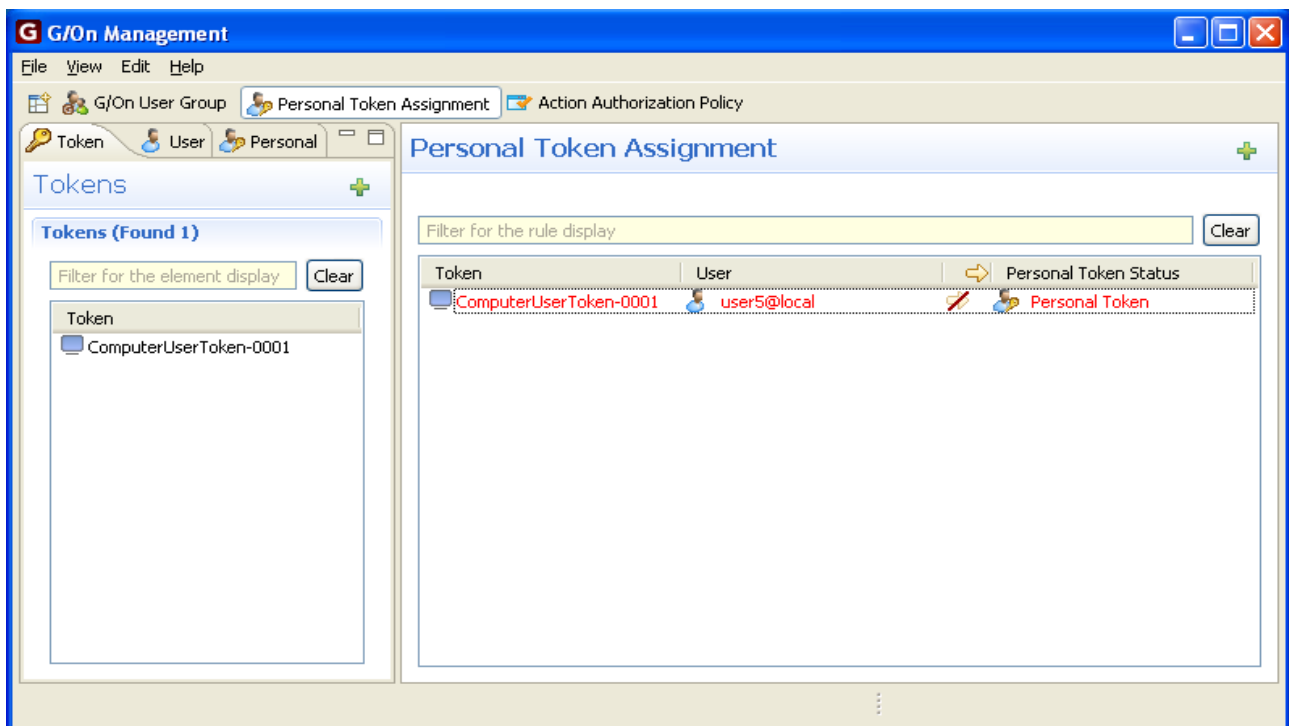
When the G/On administrator has approved the enrollment request (see below), the user can start the G/On client from the Windows Start menu, and log in.

Approving Enrollment Requests

Open the perspective “Personal Token Assignment”

Click to set focus in the rule pane, and press F5 to make sure that the rule pane shows the current data.

Find the inactive rules: the rules that are shown in red letters, and with a red line over the arrow. Hint: In order to quickly find all inactive rules, you can click on the arrow in the header row - this will sort the rules according to activation status.



The enrollment requests are shown as inactive rules. To approve a request, simply make the rules active. To do this, right-click on a rule and choose: Toggle Activation, or use keyboard short cut: ctrl+K. Hint: Details about the PC, on which the Computer User Token has been created, can be viewed by double clicking on the Computer User Token in question, in the left-hand element pane showing Tokens (use F5, to refresh, if the token is not shown).

