

G/On USB User Reference

G/On 5.4
Document revision 1
2010-03-23

G/OnTM 5

© Giritech A/S, 2010
Spotorno Allé 12, 2.
2630 Taastrup
Denmark
Phone +45 70 277 262

Legal Notice

Giritech reserves the right to change the information contained in this document without prior notice. Giritech® and G/On™ are trademarks and registered trademarks of Giritech A/S. Giritech A/S is a privately held company registered in Denmark. Other product names and brands used herein are the sole property of their owners. Unauthorized copying, editing, and distribution of this document is prohibited.

About this Document

This document describes the following features of the G/On Client:

- Changing password
- Updating, installing and removing software packages

Logging in and using G/On USB

For basic information about logging in and using the G/On USB token, please see the Getting Started User Guide for the operating system, you are using.

There are separate guides for:

- Fedora
- Windows XP
- Windows Vista
- Windows 7
- Mac

G/On Best Practice Security Rules

1. Never reveal your password to others.
2. Never leave the PC unattended when using G/On USB.
3. Always remove G/On USB from the computer when finished.
4. Always report missing or stolen G/On USB as soon as possible

Change Password

If your password is about to expire

When your password is about to expire, after the normal login, you will be prompted with a change password screen.

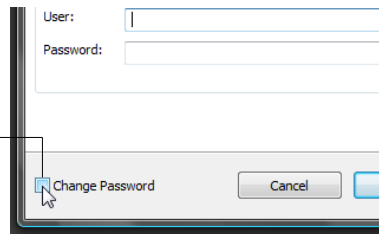
If you do not want to change your password at this time, click Cancel.

If you do want to change your password, enter your current password, and then your new password in the two next fields. Click OK. Your password has now been changed.



If your password is not about to expire

In the normal login screen, you can mark the check box: Change Password, and the change password screen will appear.



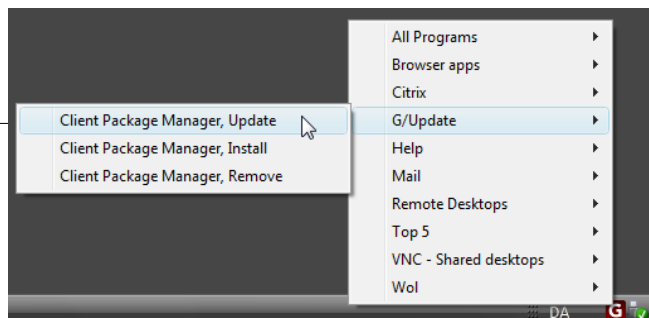
Enter your current password, and then your new password in the two next fields.

Click OK. Your password has now been changed.



Update package on the G/On USB

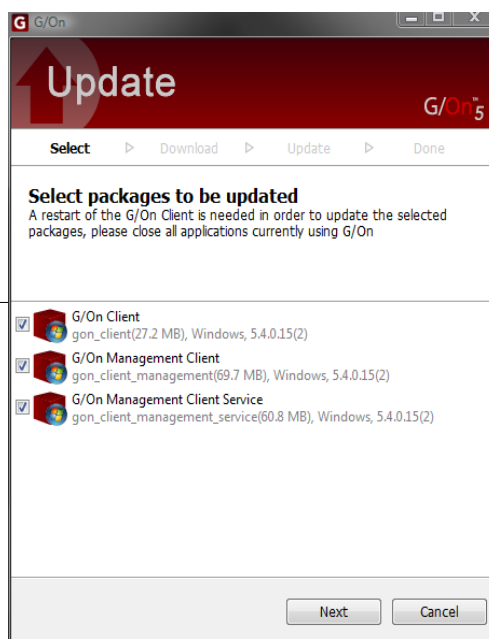
If you need to install an update, click the "G" icon, and select G/Update > Client Package Manager, Update



Select the packages you need from the list, and click Next

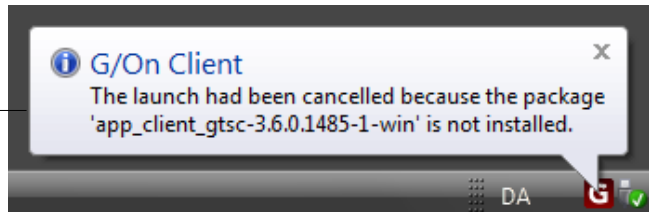
When the update is complete, click Next

After the update is complete, you may have to log in again.

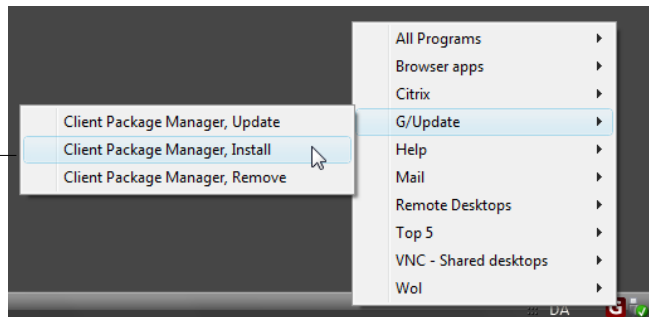


Install package on the G/On USB

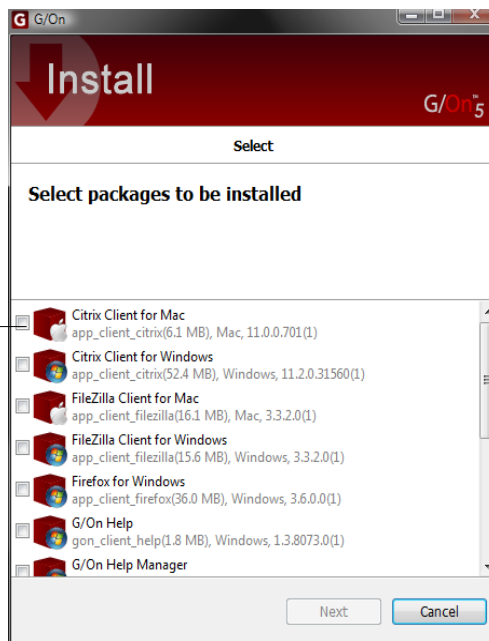
Sometimes you need a new package to launch a program from the "G" menu (like the example shown here)



To install a new package, click the "G" icon, and select G/Update > Client Package Manager, Install



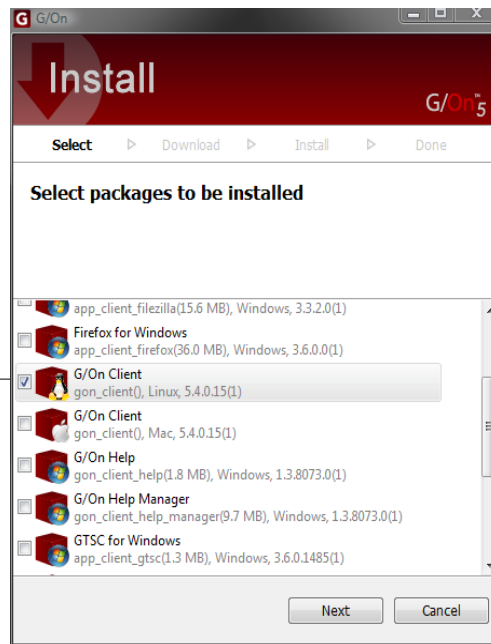
Select the packages you need from the list, and click Next.



When the installation is complete, click Next

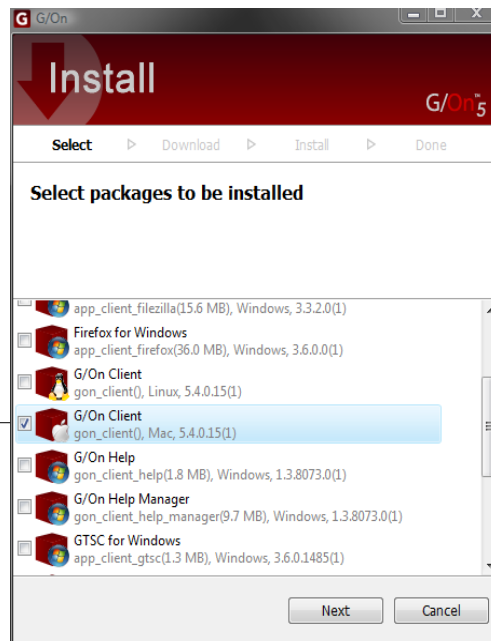
Install G/On for Linux

If you need to use the G/On USB on Fedora, and it is not already installed, select G/On Client for linux



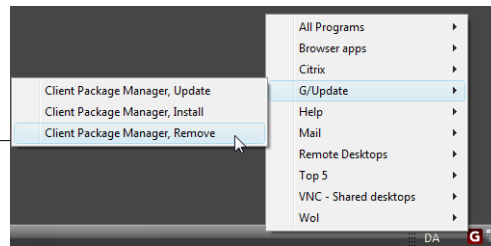
Install G/On for Mac

If you need to use the G/On USB on Mac, and it is not already installed, select G/On Client for mac

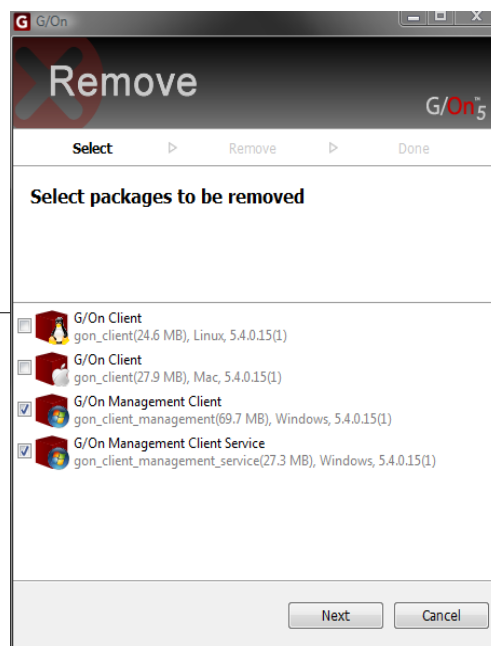


Remove package from the G/On USB

If you need to remove (uninstall) a package from the G/On USB, click the "G" icon, and select G/Update > Client Package Manager, Remove



Select the packages you need from the list, and click Next.



When the remove is complete, click Next.